

SERVICE MANUAL

Conditions of Use:

- (1) Please use this information only for the purpose of performing repair, maintenance and/or configuration services of the Sony products (hereinafter the "Repair services") under the service agreement entered into with the Sony group company (hereinafter the "Service agreement"). Using this information for any purpose other than the purpose described foregoing is forbidden.
- (2) Only the Authorized Servicer's officers, employees or subcontractors (including their officers and employees) whose duties justify a need-to-know and who have agreed to hold confidential this information (collectively hereinafter the "Permitted users") are permitted to access and use this information. To disclose or disseminate to any person other than the Permitted users is forbidden.
- (3) Destroy or erase any and all portion of this information promptly in an irrecoverable and secure fashion after achieving the purpose described in Section (1) above.
- (4) Do not copy, replicate, reproduce, alter, translate, transmit, sell, lease, or distribute this information in whole or in part without the prior written permission of the author. (Notwithstanding foregoing, it is permitted to copy and distribute this information to the Permitted users.)
- (5) Please notify immediately any leakage, loss, theft, misappropriation, or other misuse of this information by e-mail to the following address:
somk-gcs-tissnexim-adm@jp.sony.com
- (6) In addition to the above, the terms and conditions of the Service agreement shall be applied to using this information.

Revision of Information:

This information may be changed or updated at any time without any prior notice. Please confirm that this information is up-to-date before using it.

CAUTION

Danger of explosion if battery is incorrectly replaced.
Replace only with the same or equivalent type.

注意

如果电池更换不当会有爆炸危险
只能用同样类型或等效类型的电池来更换

警告

本電池如果更換不正確會有爆炸的危險
請依製造商說明書處理用過之電池

Note:

Be sure to keep your PC used for service and checking of this unit always updated with the latest version of your anti-virus software.
In case a virus affected unit was found during service, contact your Service Headquarters.

Sony CONFIDENTIAL
For Authorized Servicer

9-930-786-04

2025C33-1

© 2025.03

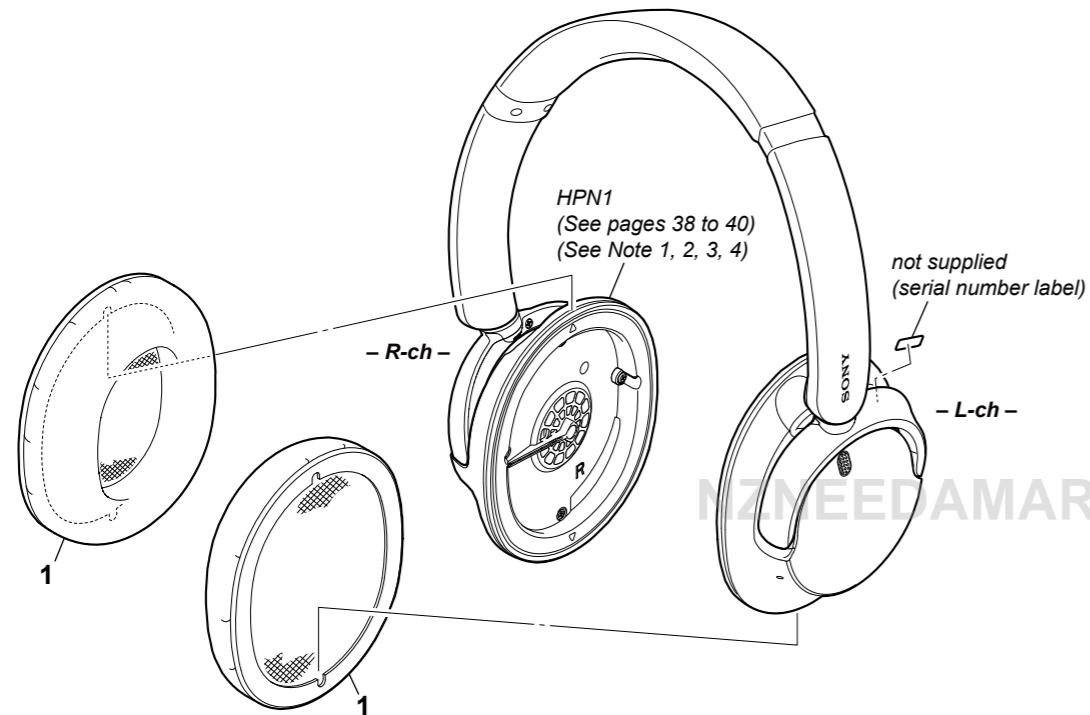
Sony Corporation

SONY®

SECTION 4
EXPLODED VIEWS**Note:**

- XX and -X mean standardized parts, so they may have some difference from the original one.
- Items marked "*" are not stocked since they are seldom required for routine service. Some delay should be anticipated when ordering these items.
- The mechanical parts with no reference number in the exploded views are not supplied.
- Color Indication of Appearance Parts Example:
KNOB, BALANCE (WHITE) . . . (RED)
↑ ↑
Parts Color Cabinet's Color
- Refer to "COLOR VARIATIONS" on page 5 about color variation of the unit.

4-1. EAR PAD SECTION (L-ch/R-ch)



Note 1: The SV headphone assy (Ref. No. HPN1) includes all parts other than the left and right ear pads and serial number label. Also, When the SV headphone assy is replaced with a new part, carefully peel off the serial number label affixed to the inside of the left hanger of the defective headphone assy, and affix it to the correct location on the new headphone assy.

(E, AUS only)

Note 2: Since the model number notation for E and AUS has been changed in the midway of production, there are three types of SV headphone assy (Ref. No. HPN1). Therefore, when replacing the SV headphone assy of E or AUS with a new part, in advance refer to "MODEL IDENTIFICATION" on page 5 and identify the type before replacing it.
(The pink color type uses only Type 3E. There not Type 1E and Type 2E of the pink color type)

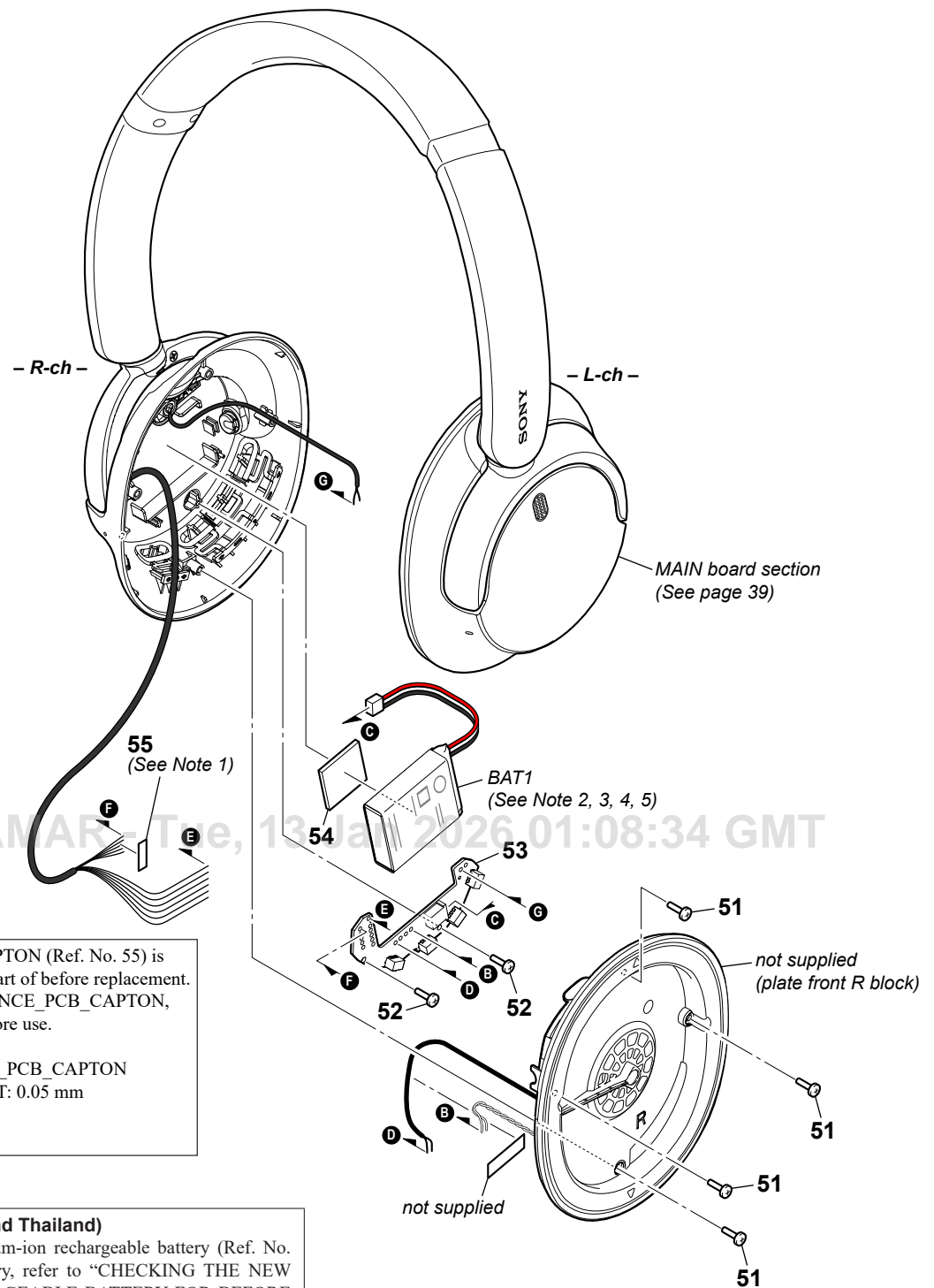
(CH only)

Note 3: Since the model number notation for CH has been changed in the midway of production, there are two types of SV headphone assy (Ref. No. HPN1). Therefore, when replacing the SV headphone assy of CH with a new part, in advance refer to "MODEL IDENTIFICATION" on page 5 and identify the type before replacing it.
(The pink color type uses only Type 2C. There is not Type 1C of the pink color type)

(IND only)

Note 4: Since the country of production has been changed in the midway of production, there are Type CNC and Type VNZ in the headphone assy (Ref. No. HPN1) for IND. When replacing the headphone assy for IND with a new part, refer to "MODEL IDENTIFICATION" on page 5 to identify the type and then replace it with a new part.
(The headphone assy of Type CNC has a limited the number of stock. If the headphone assy of Type CNC is not available, replace it with a headphone assy of Type VNZ. It is possible to replace the headphone assy of Type CNC with the headphone assy of Type VNZ)
(There is only Type VNZ in the pink color type. There is not Type CNC of the pink color type)

4-2. CN BOARD, BATTERY SECTION (R-ch)



Note 1: SV BALANCE_PCB_CAPTON (Ref. No. 55) is different in size from the part of before replacement. When using the SV BALANCE_PCB_CAPTON, cut it to the size below before use.

Size of the SV BALANCE_PCB_CAPTON
 V: 12.0 mm, W: 22.0 mm, T: 0.05 mm
 Cut size
 V: 6.0 mm, W: 15.0 mm

(Except Taiwan area, Korea and Thailand)

Note 2: When replacing the lithium-ion rechargeable battery (Ref. No. BAT1) with a new battery, refer to “CHECKING THE NEW LITHIUM-ION RECHARGEABLE BATTERY FOR BEFORE USE AND NOTES ON HANDLING” on page 4.

(Except Taiwan area, Korea, Thailand and IND)

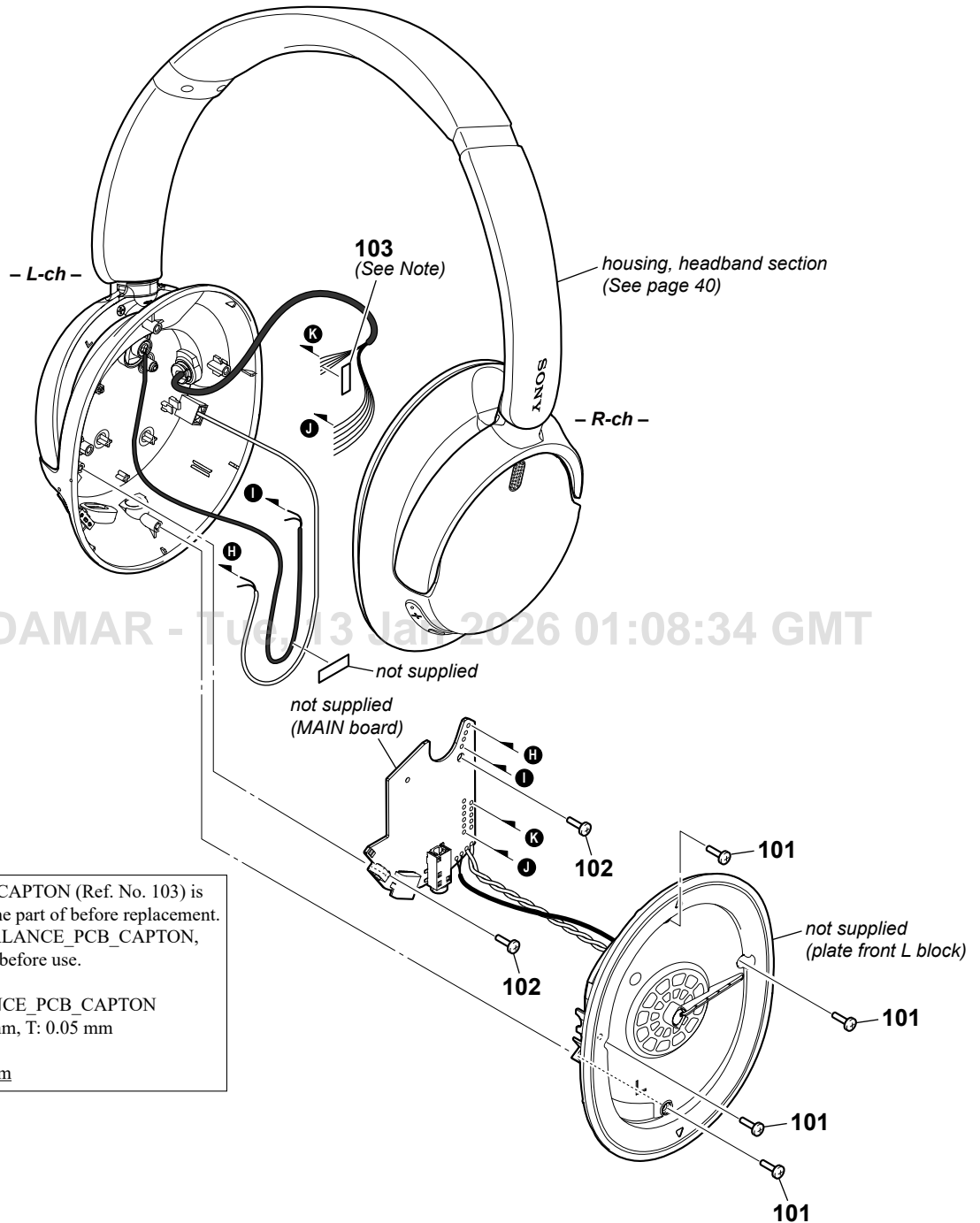
Note 3: There are several types of lithium-ion rechargeable batteries. When the lithium-ion rechargeable battery (Ref. No. BAT1) is replaced with a new battery, be sure to refer to “NOTES FOR REPLACING THE LITHIUM-ION RECHARGEABLE BATTERY” on page 7.
 (The lithium-ion rechargeable battery for IND uses only Type H4)

(Taiwan area, Korea and Thailand)

Note 4: The lithium-ion rechargeable battery (Ref. No. BAT1) cannot be replaced with a new battery.

Note 5: When removing the lithium-ion rechargeable battery (Ref. No. BAT1) from the adhesive BATT (Ref. No. 54), it cannot reuse the battery. In that case, be sure to replace it with a new battery.
 (The lithium-ion rechargeable battery cannot be replaced with a new battery in Taiwan area, Korea and Thailand.)

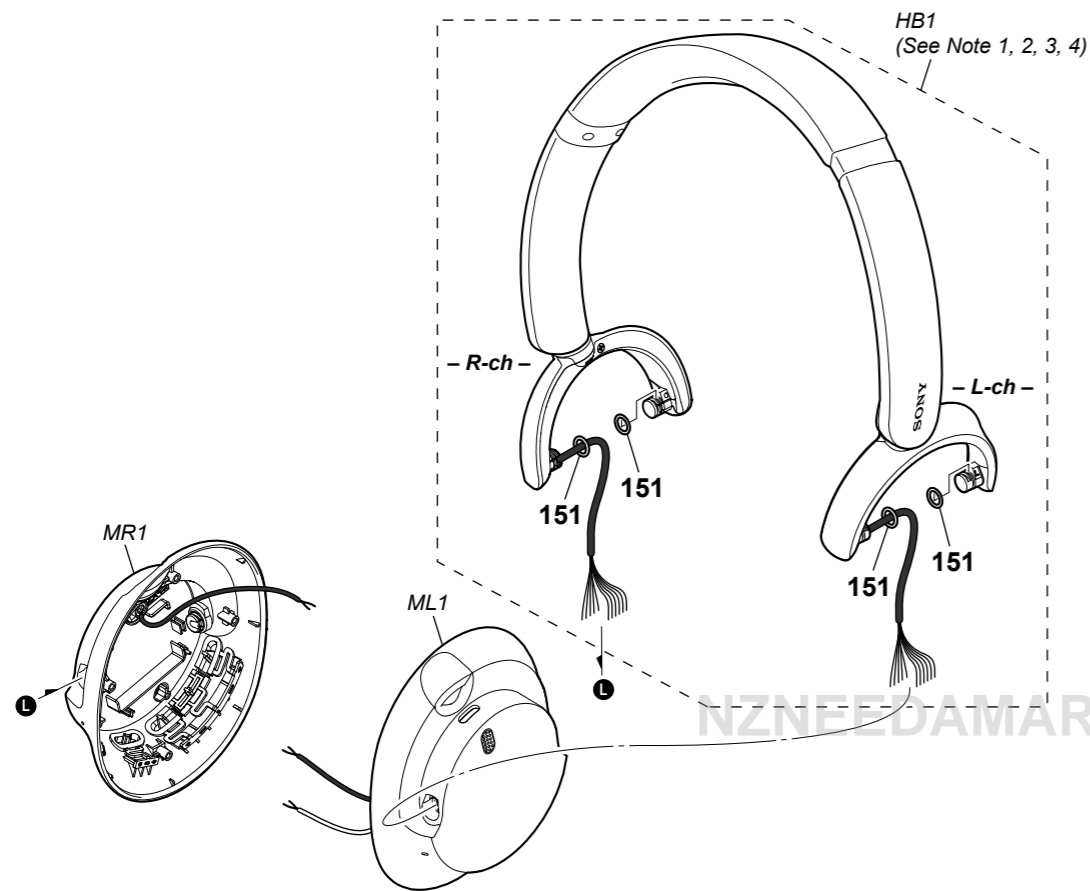
4-3. MAIN BOARD SECTION (L-ch)



Note: SV BALANCE_PCB_CAPTON (Ref. No. 103) is different in size from the part of before replacement. When using the SV BALANCE_PCB_CAPTON, cut it to the size below before use.

Size of the SV BALANCE_PCB_CAPTON
 V: 12.0 mm, W: 22.0 mm, T: 0.05 mm
 Cut size
 V: 6.0 mm , W: 17.0 mm

4-4. HOUSING, HEADBAND SECTION (L-ch/R-ch)



Description	Remark
HOUSING SUB ASSY L, SV (B) (for L-ch) (with FF microphone, FF MIC holder, FF MIC bracket, Grille, Light guide, Light guide rubber, Button POWER, TALK microphone, TALK MIC holder) (for Black)	
HOUSING SUB ASSY L, SV (W) (for L-ch) (with FF microphone, FF MIC holder, FF MIC bracket, Grille, Light guide, Light guide rubber, Button POWER, TALK microphone, TALK MIC holder) (for White)	
HOUSING SUB ASSY L, SV (L) (for L-ch) (with FF microphone, FF MIC holder, FF MIC bracket, Grille, Light guide, Light guide rubber, Button POWER, TALK microphone, TALK MIC holder) (for Blue)	
HOUSING SUB ASSY L, SV (P) (for L-ch) (with FF microphone, FF MIC holder, FF MIC bracket, Grille, Light guide, Light guide rubber, Button POWER, TALK microphone, TALK MIC holder) (for Pink)	
HOUSING SUB ASSY R, SV (B) (for R-ch) (with FF microphone, FF MIC holder, FF MIC bracket, Grille, Button (NC, VOL, PLAY)) (for Black)	
HOUSING SUB ASSY R, SV (W) (for R-ch) (with FF microphone, FF MIC holder, FF MIC bracket, Grille, Button (NC, VOL, PLAY)) (for White)	
HOUSING SUB ASSY R, SV (L) (for R-ch) (with FF microphone, FF MIC holder, FF MIC bracket, Grille, Button (NC, VOL, PLAY)) (for Blue)	
HOUSING SUB ASSY R, SV (P) (for R-ch) (with FF microphone, FF MIC holder, FF MIC bracket, Grille, Button (NC, VOL, PLAY)) (for Pink)	

Note 1: When replacing the headband assy (Ref. No. HB1) with a new part, carefully peel off the serial number label affixed to the inside of the left hanger, and affix it to the correct location on the new headband assy.

(E, AUS only)

Note 2: Since the model number notation for E and AUS has been changed in the midway of production, there are three types of SV headband assy (Ref. No. HB1). Therefore, when replacing the SV headband assy of E or AUS with a new part, in advance refer to "MODEL IDENTIFICATION" on page 5 and identify the type before replacing it.
(The pink color type uses only Type 3E. There not Type 1E and Type 2E of the pink color type)

(CH only)

Note 3: Since the model number notation for CH has been changed in the midway of production, there are two types of SV headband assy (Ref. No. HB1). Therefore, when replacing the SV headband assy of CH with a new part, in advance refer to "MODEL IDENTIFICATION" on page 5 and identify the type before replacing it.
(The pink color type uses only Type 2C. There is not Type 1C of the pink color type)


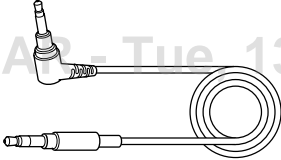
(IND only)

Note 4: Since the country of production has been changed in the midway of production, there are Type CNC and Type VNZ in the headband assy (Ref. No. HB1) for IND. When replacing the headband assy for IND with a new part, refer to "MODEL IDENTIFICATION" on page 5 to identify the type and then replace it with a new part.
(The headband assy of Type CNC has a limited the number of stock. If the headband assy of Type CNC is not available, replace it with a headband assy of Type VNZ. It is possible to replace the headband assy of Type CNC with the headband assy of Type VNZ)
(There is only Type VNZ in the pink color type. There is not Type CNC of the pink color type)

NZNEEDAMAR - Tue, 13 Jan

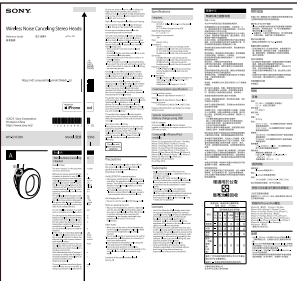
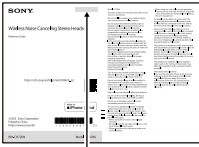
SECTION 5 ACCESSORIES

Sony CONFIDENTIAL
For Authorized Servicer

<p>501 USB Type-C® cable (USB-A to USB-C®) (approx. 20 cm) (1)</p>	<p>502 Headphone cable (approx. 1.2 m) (1)</p>
	

ZNEFDAMAR - Tue, 13 Jan 2026 01:08:34 GMT

(IND only)
Note: There are two types of reference guides for IND, Type CNC and Type VNZ depending on the production country.
When replacing the reference guide with a new reference guide, check the actual size of the reference guide or the part number printed on the reference guide before replacing.

<p>Type CNC Size: 315 × 296 mm</p>	<p>Type VNZ Size: 210 × 148 mm</p>
	
<p>5-045-498-31 or 5-045-498-32</p>	<p>5-045-498-71 or 5-045-498-72</p>